

Sürelî Yayınlar

Mining Magazine

APRIL 1990

- 238 Panorama
Coolijarloo I beach sand dredge operational in W.A.: Taltal Joint Venture: a new nitrate and iodine project in Chile; Magnesite project underway in Queensland; Cornish tin: Mines close, tourist trail to open; New Brunswick Power, Canada, plans coal-fired facilities; "Reclaiming Tailings" - a reader comments on February's article.
- 252 Kankberg
Operations at this new Boliden underground mine near Skeleftea in Sweden which uses an innovative electric loading and truck haulage system running from an overhead trolley line.
- 260 Tin Beneficiation
A recently - commissioned plant in north-western Brazil is described.
- 266 "Water-Only" Cyclones
The Salient features of this type of cyclone, gaining popularity in coal washeries, are outlined.
- 269 The Bog Mine
A short history of a Shropshire mine once regarded as one of the richest lead mines in Britain.
- 277 Mining in China
A brief overview of mining in the country which hosts next month's meeting of the World Mining Congress.
- 283 Beijing Preview
Brief details on which countries and manufacturers will be represented at the 14th World Mining Congress & Exhibition taking place in China next month.
- 287 Dexing Copper Mine
This large well-established mine is currently being expanded to 33 Mt/y of ore.

MAY 1990

- 320 Panorama
Congolone heavy minerals sands project, Mozambique; Sua Pan soda ash project, Botswana moves towards production; Cerro Castillo, Argentina, plans to expand Mina Angela; Cogema soon to close uranium mines in western France; Efficient underground mining at Blackdome, B.C.
- 330 Butte Mining
Mining is once again in progress at the historic Butte site in Montana. The current underground operations are described.
- 240 Precious Metals in Portugal
An outline is given of the legal and geological background of Portuguese mining activity, followed by brief accounts of precious metals occurrences — some worked in the past and some of possible future interest.
- 346 Syama Gold
This new mine in Mali, the first fruit of BHP-Utah Minerals International's major exploration effort in West Africa, shipped its first gold in January this year.
- 350 Silicon
The second most abundant element in the earth's crust is very versatile and has many important applications, as outlined here.
- 355 Mining Survey
A review of the Western World's non-gold mine development projects.
- 366 Digital Geological Mapping
The author outlines the many benefits to be gained from digital map production.
- 380 Computer File
-
- ### JUNE 1990
- 400 Panorama
Developments at Stillwater platinum mine;

IFC's \$3 million stake in new Ghana gold mine; Historic gold mine reopens in W. Australia; Macael opencast mines meet rising marble demand; Colombia's gold production and prospects.

416 LKAB

Sweeden's major iron ore mining company was formed 100 years ago this month. Despite recurring problems in the iron ore market, it has successfully survived by keeping in the forefront of mining technology.

422 Kiruna mine today

Mining and processing methods in use at the world's largest underground iron ore mine.

428 Super stopes

Sublevel stoping of giant proportions; **one** key to still greater future productivity at Kiruna mine.

437 Wheel loaders

Geoff Pears looks at the latest models in the wide range available.

446 Nigerian coal

A review of the substantial coal deposits remaining in Nigeria which, if worked, could make a positive contribution the the national economy.

Mining Engineering

APRIL 1990

333 Newmont Gold outlines its mine planing procedures

Stephen P. Winkelmann

339 Total station surveying at Bingham Canyon

Gary J. Goldberg and Bruce P. Ream

343 Development and implementation of economic materai splits at Chino Mines

David J. Gurtler

345 Mining industry responds to crystalline silica regulations

W.J.Miles

349 Applying computers on-board surface mining equipment

355 Comparison of two simulators for belt system design

S.D. Thompson, G. T. Lineberry, and A.j. Basu

360 Alteration zonation of the Fortitude gold skarn deposit, Lander Country, NV

GL Myers

368 Development and extinguishment of oil shale rubble fire

M.J. SapkoandN.B. Greninger

MAY 1990

431 EXPLORATION

461 MINING

475 COAL

483 PROCESSING

JUNE 1990

542 1989 review of concentration activities

B.K. Parekh, B.Hancock, D.Norrgran, and B. Tippin

552 GEM facts: Photo contest winners announced

585 1989 review of coal utilization activities

D.O'Conner

593 1990 Jackling Lecture: The making of a mining engineer

Howard L Hartman

597 DISCUSSION - Limestone mining: Reserves and valuation

B.C. Lewis and R.P. Moran

599 Geocharacterization of low-grade, disseminated gold and silver ores with applications to in situ mining

R.L. Blake and D.Earley III

604 Heavy Metal sorption with clinoptilolite zeolite: Alternatives for treating contaminated soil and water

D.Leppert

Industrial Minerals

APRIL 1990

- 19 Salt-A status report
- 35 The Swedish minerals industry White minerals strength
- 57 Mineral Services Rotterdam bridges the gap
- 61 The Hungarian perlite industry

MAY 1990

- 20 Annual report highlights
- 22 Pumice markets-Volcanic rise of stone-washing

- 39 Minerals in foundry casting investment in the future
- 52 Minerals in the US south-west-Breaking rocks in the hot sun

JUNE 1990

- 16 Annual report highlights
- 19 New Zealand's minerals-For domestic consumption
- 37 The Italian tile industry-Designs on quality exports
- 51 Baie Verte wet process plant-Project development and construction
- 57 Economic evaluation of glass raw materials

International Journal of Mineral Processing

MAY 1990

- 161 Dependence of shear-flocculation on surface coverage and zeta potential
R.Sivamohan and J.M. Cases
- 173 The removal of zinc from solutions by foam separation, I. Foam separation of complex zinc anions
K.Jurkiewicz
- 189 Quantitative evaluation of forms of potassium butyl xanthate adsorption of galena from IR spectra
E.D. Kriveleva and V.A. Konev
- 199 Effect of pH on the high-gradient magnetic separation of kaolin clays
C.B. Maurya and S.G. Dixit
- 209 Studies in the thermal decomposition of natural siderites in the presence of air
A.P. Dhupe and A.N. Gokarn
- 221 Application of phase transfer catalysis to treating refractory oxidized copper ores
Deng Tong and Chen Jiayong
- 231 Electrochemical control of metallic copper and chalcopyrite - xanthate flotation
J.R. Roos, J.P. Clesi and A.S. S. Sudarsono
- 247 The problem of recovering very fine particles in minerals processing — A review
R.Sivamohan
- 289 Modelling screening as a conjugate rate process
G.K.N.S. Subasinghe, W. Schaap and E.G. Kelly
- 301 X-ray photoelectron spectroscopic and electrochemical studies of the interaction of xanthate with galena in relation to the mechanism proposed by Page and Hazell
A.N. Buckley and R. Woods
- 313 Interaction of finely ground galena and potassium amylxanthate in flotation, 1. Influence of alkaline grinding
J.M. Cases, M.Kongolo, P. de Donato, L.Michot and R. Erre

instution of Mining and Metallurgy

JANUARY-APRIL 1990

- A1** Integrated mine planning systems at RTMS and Palabora
RMKear
- A5** Asfordby — a new mine for the future
W.E. Hindmarsh
- A15** Evaluation of Of fin River gold placer, central region of Ghana
A.E. Annels and E.B. Boakye
- A26** Mine planning at Panasqueira mine, Portugal
D.Mireku-Gyimah, A.J.B. Mill and H.E.K. Allen
- A37** Aspects of environmental control in establishment of a deep to ultra-deep gold mine
H.J. Fourie
- Technical notes**
- A42** Computerized mine planning at Rio Tinto Minera's Cerro Colorado open-pit operation, southern Spain — a case study
A. Preller and C.Rich
- A46** Computer use in mine engineering at Boron open-pit operation of U.S. Borax, California, U.S.A.
CA. Maddocks
- A50** Application of Minenet software system at Enonkoski mine, Finland
M. Pulkkien et al
- A53** Mine activlity and resource scheduling with use of 'Three dimensional component modelling'
S. W. Houlding and M.A. Stoakes
- A60** Computerized planning at Neves - Corvo copper mine, Portugal
LA. Teixeira and D.J. Calipers
- JANUARY-APRIL 1990**
- B1** Banded Iron formation of Wadl Sawawin distrlct.Kingdom of Saudi Arabia
D.C. Goldring
- B15** Barite dispersion in drainage sediments in arid climatic regimes
G.R. Davis et al.
- B43** Multiple-objective decision - making models as an exploration planning tool
M.J. Shulman
- B52** Field investigation of Marmato gold deposits of Caldas and Risaralda, Colombia
A.J. Warden and H.Colley
- B54** Mineralogy and geochemistry of metallic well scale, Raleigh and Boykin Church oilfields, Mississippi, U.S.A.
J.A. Saunders and E.L. Rowan
- JANUARY-APRIL 1990**
- C1** Significance of gold mineralogical balances in mineral processing
S.L. Chryssoulis and L.J. Cabri
- C11** Interpretation of spiral and sluice tests
A.B. Holland-Batt
- C21** Preconcentration by dense-medium separation— an economic evaluation
G.D.Schena, R.J. Gochin and G.Ferrara
- C32** Analysis of flotation kinetics of Mananjhand copper ore, India, in terms of distributed flotation-rate constant
S.P. Mehrotra and N.P.H. Padmanabhan
- C43** Effect of silver ion on kinetics of biochemical leaching of chalcopyrite concentrate
LB. Sukla, G.Roy Chaudhury and R.P. Das
- C47** Influence of potential distribution on design of fused-salt electrorefining cells
A.J. Godsell and D.J. Fray
- C54** Separation of antimony minerals impurities from complex sulphide ores
T.Lager and K.S.E. Forssberg
- C62** Equilibrium model with reference to stibnite flotation
I. Granberg, T.Lager and K.S.E. Forssberg
- Technical note**
- C67** Extraction of tungsten from sheelite concentrates by soda ash roast-leach method
R.K. Paramguru, K.N. Jena and P.K. Sahoo

CIM Bulletin

APRIL 1990

- 73 Les Mines Selbaie Story **introduction**
R.C. Bryce
- 77 Engineering
A.J.W. Law
- 79 Geology
J.J. Bouillon
- 83 Underground mining
Y.Fourmanoit
- 88 Open pit mine
C.Pageau and D. Caron
- 94 Concentrator development and operation
K.Wood and D.Caron
- 101 Equipment maintenance
G.Begin
- 105 Organization of administrative and technical services
R.C. Bryce
- 108 La détermination des EGP dans les roches; revue des techniques analytiques basées sur l'utilisation de la fusion plombeuse et de la fusion au sulfure de nickel
Mario Bergeron

MAY 1990

- 35 Application of longhole drilling methods for narrow vein mining
P.Larsen, R. Cyr and W. Ouesnel
- 41 Roadheader excavation in consolidated rockfill at Kidd Creek Mines
V.C. Wittchen, J. E. Croxall and T.R. Va
- 46 Loose rock detection with infrared thermography
T.R. Yu, J.G. Henning and J.E. Croxall
- 53 The application of high density paste backfill at Dome Mine
*R.J. Perry
D.L. Churcher*
- 59 Computerized fire monitoring, criteria, techniques and experience at Inco Limited
Jozef S. Stachulak

- 68 Sélection optimale des quantités d'explosifs basée sur des contraintes de production et un résultat d'analyse de régression multiple
M. Lan!lamme et J.L. Collins
- 73 Rapid graphical analysis of rock slopes
D.M. Cruden
- 77 The Lakeshore porphyry copper deposit, Pinal County, Arizona; geologic setting and physical controls of mineralization
Holly L.O. Huyck

JUNE 1990

- 43 Cannon Mine's B-Neath zone — exploration through production
J.J. Baz - Dresch
- 49 Use of microscope in narrow stope mining
F.Lambert
- 53 AOSTRA underground test facility: progress and potential
J.A. Haston, R.W. Huhning and, S.D. Gittins
- 5g Experience with a new K⁴⁰ System at PCS Mining, Lanigan Division
D.K. Storer and S. Tkach
- 63 Alimak narrow vein mining at the Dome Mine,
B.E. Robertson, J.T. Vehkala and S.S. Kerr
- 67 Anionic activation in the flotation of chromite from a low-grade ore
P.R.A. Andrews
- 70 Late Precambrian - Early Paleozoic volcanic regimes and associated massive sulphide deposits in the northeastern mainland Appalachians
LR. Fyfee, CR. van Stall and J.A. Winchester
- 81 Ceramics for the continuous casting of small cross section product
A.J. Rigby, N.A. McPerson and P.C. Stevens
- 85 R.H. vacuum degassing-operating experience and refractory design
B.H. Baker and B. P. Schrader

- SERAMİK
- REFRAKTER
- ÇİMENTO
- PORSELEN
- CAM

Sanayileri ile, ilgili diğer sanayi dallarına

- Tüvenan (Ham cevher)
- Sınıflandırılmış
- Öğütülmüş-Zenginleştirilmiş

**KİL, KAOLEN, FELDSPAT, FLOTE FELDSPAT, KUVARS,
BENTONİT, FRİT, MANYEZİT, KALSİNE MANYEZİT**

ve diğer endüstriyel hammadde ve işlenmiş ürün olanakları ile hizmet vermektedir.

ESAN Eczacıbaşı
Endüstriyel Hammaddeler
Sanayi ve Ticaret A.Ş.

Bağdat Yolu Şafak Sok. No: 3 Kartal-Istanbul
Tel. 353 83 35 (4) Teleks 29243 esha tr Fax. 353 74 23

ESAN Eczacıbaşı End. Ham. ve Tic. A.Ş. bir Eczacıbaşı Topluluğu kuruluşudur.

Cominco  **Madencilik**
Sanayi Anonim Şirketi

A Subsidiary of Cominco Resources Int. Ltd.

Farabi Sokak 3/3 06680 Çankaya-Ankara/TURKEY



EGEMETAL MADENCİLİK A.Ş.

Krom ve Krom Konsantresi-
Manganez-Barit-Antimuan

CUMHURİYET CAD. 349/9-10 HARBİYE-İSTANBUL

Telex : 22471 MEŞE TR
22407 İMTO TR

Telefon : 131 15 85 (8 Hat)
P.K. 285 OSMANBEY-İSTANBUL

MADENCİLİK, HAFRIYAT VE İNŞAATTA GÜÇLÜ KURULUŞLAR

mt mil-ten
ŞİRKETLER TOPLULUĞU



SEDA MADENCİLİK ve TİC. LTD. ŞTİ.

Selin

AKARYAKIT TİCARETİ LTD. ŞTİ.



BİR İNŞAAT
ve TİC. LTD. ŞTİ.

SERTEN
MADENCİLİK TİC. LTD. ŞTİ.

İştiraklerimiz:

YENİKÖY

MADEN İŞLETMECİLİĞİ TİC. LTD. ŞTİ.

DENİZ

KÖMÜR İŞLETMESİ TİC. LTD. ŞTİ.

Ferahevler Yenyol Sok. No. 18
MİL - TEN Binası Tarabya - İST.
Tel: 123 05 02 - 7 Hat
Telex : 26 745 Okte Tr.
Fax : 162 50 52

İrtibat Bürosu:
Mazhar Öktek Sok. No. 13/1
Şişli - İstanbul
Tel: 146 33 22
131 12 99



KARADENİZ
BAKİR
İŞLETMELERİ A-Ş-

SERMAYESİ 200.000.000.000.-TL.
ZİYA GÖKALP CAD. NO.17-ANKARA

28.5.1968 tarihinde kurulan şirketin bugün
MURGUL, SÜRMENE, SAMSUN ve KÜRE'de
sahip olduğu işletme ve tesislerinde ;

Yılda Ortalama:

50.000 ton Blister Bakır
380.000 ton Sülfürik Asit
180.000 ton Pirit Konsantresi
üretilmektedir.

BİNALARIN ISITILMASINDA YENİ BİR SİSTEM

• "UNITHERM Isı Üretim Sanayi Anonim Şirketi" Gagat Maden Ticaret ve Sanayi Limited Şirketi ve Türk-Alman müteşebbislerin ortaklığı ile "Mermer Isıtma Plakaları" üretmek üzere kurulmuştur.

Q Mermer Isıtma Plakalarının duvara monte edilip ısıtmada kullanılanı "Mermer Radyatör" mutfak ve banyo gibi alanların taban ısıtmasında kullanılanı "Mermer Yer Isıtma Ünitesi" adıyla üretilmektedir.

• Mermer Radyatörler, mesken, bina ve işyerlerinin her türlü iklim şartlarında ısıtılması için başarı ile kullanılmaktadır.

• Mermer Radyatörlerin tesis maliyeti feuloillü veya kömürlü kaloriferlerin tesis maliyetinden ucuzdur.

Q Elektrik enerjisiyle çalışan Mermer Radyatörleri çok geç soğuduğundan mermer radyatörlerin elektrik sarfiyat maliyeti, kömürlü kaloriferlerin kömür sarfiyat maliyetinden azdır.

• Mermer Radyatörlerin 30 cm x 30 cm x 3 cm. eb'adından 50 cm x 120 cm x 3 cm eb'adına kadar muhtelif çeşitleri vardır.

• 200 m²'lik bir daireye Mermer Radyatörle ısıtma tesisi 2 saatte kurulabilir.

• Mermer Yer Isıtma Üniteleri" banyo ve mutfakların tabanına döşenir ve taban ılıkliğini devamlı muhafaza eder.

• "Mermer ve Isıtma Üniteleri" ile döşenen dairelere rahatlık ve konfor gelir.

• Mermer Isıtma Plakaları her renk mermerden yapılır. Salonunuza, odanıza, büronuza uygun çeşit muhakkak vardır. Dekoratifdir.

Ü Unitherm A.Ş.'nin Mermer Isıtma Plakaları çevre kirliliğine de kesin çözümdür.

Q Unitherm A.Ş. Mermer Isıtma Plakaları ışınal sistemle ısıttığından insana huzur ve mutluluk veren bir sıcaklığı olur.

Q UNITHERM Isı Üretim Sanayi Anonim Şirketi" ürünü olan Isıtma Plakaları 20 yıldan beri Türk Madencilik Sektöründe hizmet veren "Gagat Maden Ticaret ve Sanayi Limited Şirketi" tarafından temin edilmektedir.

Q Mermer Isıtma Plakaları Dünyada 4 yıldan beri kullanılan çağdaş bir ürün olup, Türkiye'de "UNITHERM Isı Üretim Sanayi Anonim Şirketi" tarafından Alman teknolojisi ile üretilerek yurt içi ve yurt dışı inşaat Sektörü'nün hizmetine sunulacaktır.



TÜRKİYE KÖMÜR İŞLETMELERİ KURUMU GENEL MÜDÜRLÜĞÜ

"1990 YILINDA, 10 MÜESSESESİ İLE
LİNYİT KÖMÜRÜ VE ASFALTİTLE
42 MİLYON TON ÜRETİMİ VE
120 MİLYAR TL YATIRIMLARIYLA
YURT HİZMETİNDE"

TESHİN VE SANAYİ İHTİYAÇLARI İLE
TERMİK SANTRALLARIN
ENERJİ KAYNAĞINI TEMİN EDEN
EN BÜYÜK KURULUŞ.



Kömür bütün Türkiye'yi ihya edecek bir servettir
K. Atatürk

T.T.K.

TÜRKİYE'DE METALURJİK ÖZELLİKTE TAŞKÖMÜRÜ ÜRETEK TEK KURULUŞ TÜRKİYE TAŞKÖMÜRÜ KURUMU

YARATTIĞI İŞ HACMI VE İSTİHDAM OLANAKLARI BAKIMINDAN
ÜLKEMİZİN EN BÜYÜK KURULUŞLARINDANDIR

Adres : TTK GENEL MÜDÜRLÜĞÜ-ZONGULDAK/TÜRKİYE
Telefon : (9-381) 13521 (5 Hat)
Telex : 48536 TTKZ TR
Fax : (9-381) 11 900

TÜRKİYE TAŞKÖMÜRÜ KURUMU ANKARA İRTİBAT BÜROSU

Adres : GENÇLİK CAD. DÖNGEL SOK. NO: 119
ANITTEPE/MALTEPE
Telefon : (9-4) 231 93 82
Fax : (9-4) 231 93 82

DEĞİŞİK KARAKTERDEKİ KÖMÜRLERİN ÜRETİLDİĞİ MÜESSESELER

ARMUTÇUK TAŞKÖMÜRÜ İŞLETME MÜESSESESİ (ARMUTÇUK LAVUARI)

KRİBLE
18-50
10-18
0-10
ŞLAM

KOZLU VE ÜZÜLMEZ TAŞKÖMÜRÜ İŞLETME MÜESSESESİ (ZONGULDAK LAVUARI)

KRİBLE
18-50
10-18
0-10
6-10
MİKST
ŞLAM

KARADON TAŞKÖMÜRÜ İŞLETME MÜESSESESİ (ÇATALAĞZI LAVUARI)

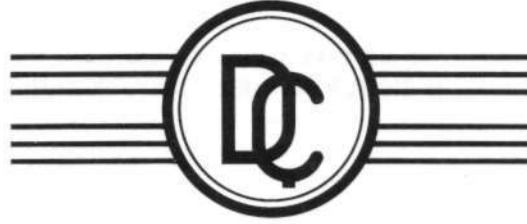
KRİBLE
18-50
10-18
0-10
MİKST
ŞLAM

AMASRA TAŞKÖMÜRÜ İŞLETME MÜESSESESİ (AMASRA LAVUARI)

KRİBLE
18-50
10-18
0-10
TUVÖNAN

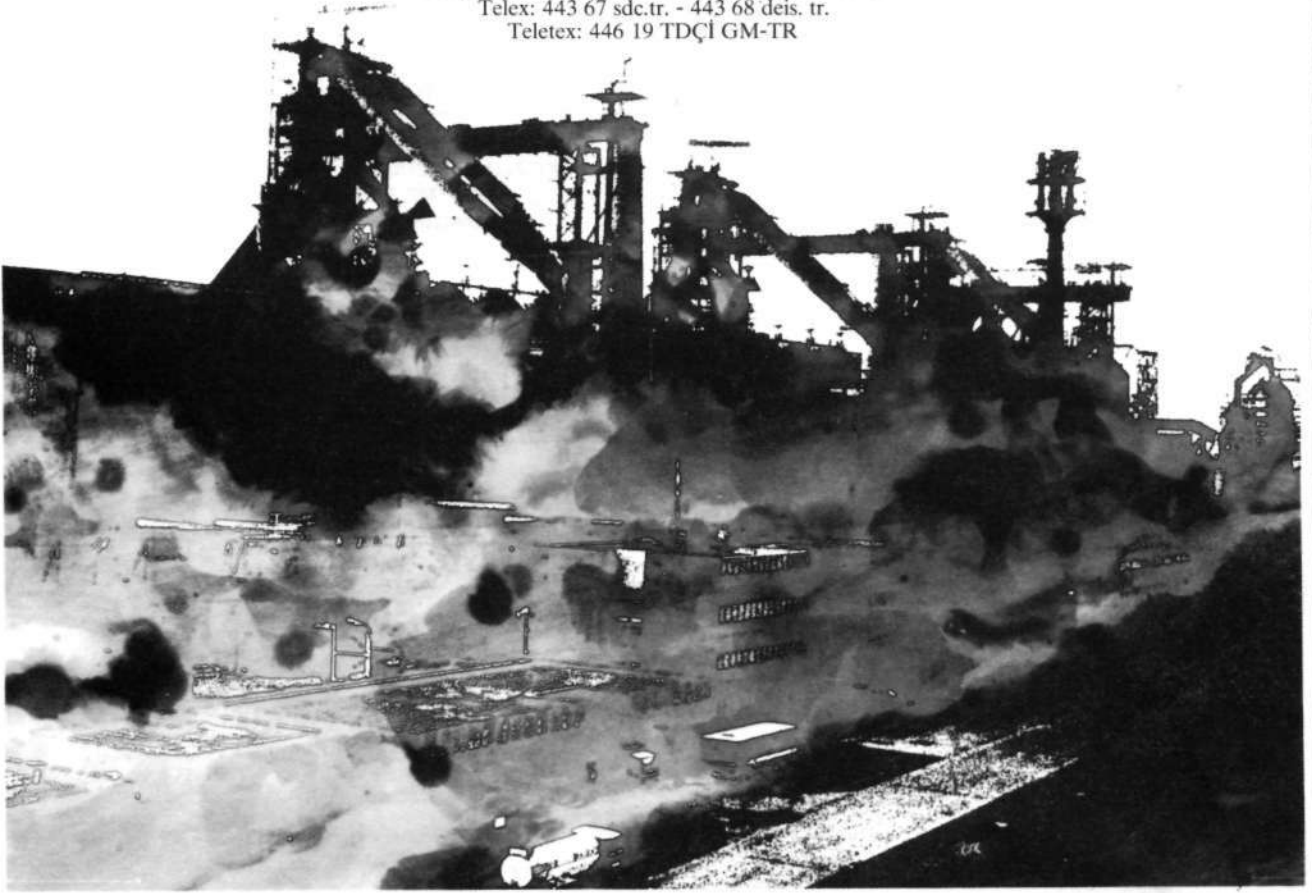
yurdumuzun sönmeyen ocağı..

Sıcak haddelenmiş uzun ürünler
Blum, kütük, inşaat demirleri, köşebentler ve profiller,
demir-çelik ve demir dışı dökümler
Her cins tasarım, mühendislik ve danışmanlık hizmetleri
Çelik konstrüksiyon yapıların imalat ve montajı
Ağır teçhizat, köprü, Radyo-TV anten direkleri
Makina ve teçhizat üretimi
Anahtar teslimi endüstriyel tesisler



TÜRKİYE DEMİR ve ÇELİK İŞLETMELERİ GENEL MÜDÜRLÜĞÜ

Ziya Gökalp Caddesi, No:80 Kurtuluş/ANKARA
Tel: (4) 135 49 00 (43 Hat) Fax: (4) 134 47 05-06
Telex: 443 67 sdc.tr. - 443 68 deis. tr.
Teletex: 446 19 TDÇİ GM-TR



MADEN TETKİK VE ARAMA GENEL MÜDÜRLÜĞÜ

ALANINDA EN ESKİ VE EN BÜYÜK KURULUŞ



55
Yıllık
BİLGİ VE TECRÜBE BİRİKİMİ



TEL:(90M4)-213 69 18
(90)-(4)-222 51 12

TLX:42741 - mta tr
42040 - mta tr
ANKARA

Fax: (90)-(4)-222 82 78



Ellibeş yıldır madenlerimizi gün ışığına çıkartarak dünyaya ulaştıran, tasarruflarınızı kârlı yatırımlara dönüştüren, başarısı dünyaca onaylanan, büyük ve güçlü kuruluş E T İ B A N K Türkiye için önemli bankadır.

• • **ETİBANK**

"güçlü kuruluş, güçlü bankacılık"